

# SNO-WAY E-Z FIT WELDED-IN SKIN STRAIGHT BLADE SNOW DEFLECTOR (P/N 99101042) INSTALLATION INSTRUCTIONS FOR 26, 26R, 29R, 29HD, 29THD, 32 CONTRACTOR, REV HD, MBR & MBC SERIES PLOWS



**1. THINK SAFETY, ALWAYS WEAR SAFETY GLASSES WHEN PERFORMING THE OPERATIONS PRESCRIBED IN THESE INSTRUCTIONS**

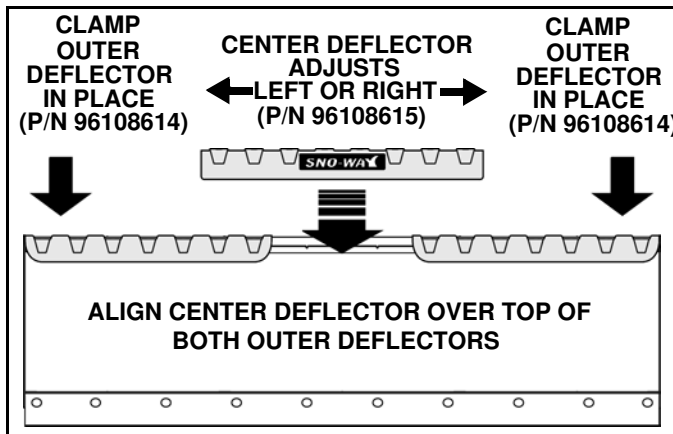
**2. READ ALL INSTRUCTIONS CAREFULLY BEFORE ATTEMPTING INSTALLATION**



1. Lower the snow plow blade to a flat, level surface. To prevent accidental operation of the blade, disconnect power connection from vehicle.

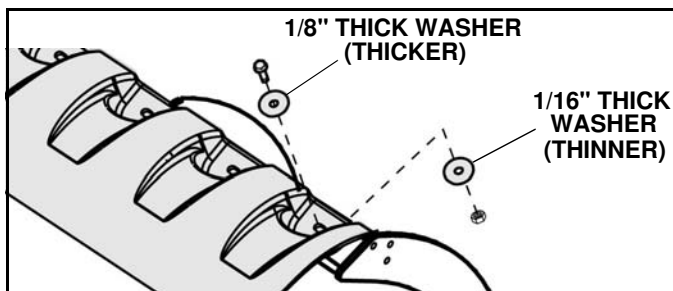
2. Position (1) Snow Deflector section (p/n 96108614) to the outside top edge of the plow blade. Clamp the deflector flat against the top of blade using a padded bus bar or spring clamp. Repeat this step for the opposite snow deflector section. (See Figure 1-1)

3. With both outer deflectors clamped in place, position the center deflector section (p/n 96108615) over the top of the outer snow deflectors. The reinforcement ribs in the deflectors should overlap and seat flush. If they do not seat together, reposition the outer deflectors until they install flat on the blade frame. (See Figure 1-1) Clamp in place.



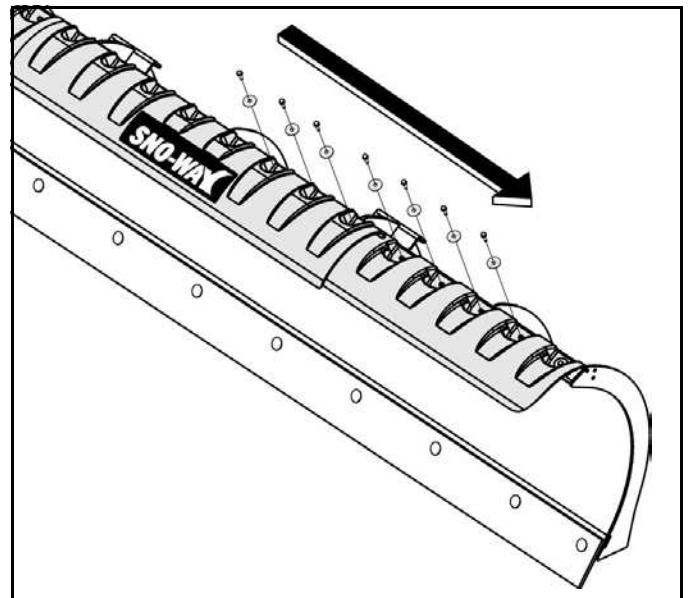
**Figure 1-1**

4. With all deflector sections clamped in place on the blade, install one cap screw (p/n 98100253) and 1/8" thick fender washer (p/n 98100484) through the holes in the outer deflectors and blade. Loosely install a 1/16" thick fender washer (p/n 98100485) and locknut (p/n 98100255) on both screws. (See Figure 1-2).



**Figure 1-2**

5. Complete the snow deflector installation by installing the remaining hardware. Starting from the center of the blade and working outward, install (9) screws and (9) 1/8" thick fender washers through the deflectors and blade. Loosely install a 1/16" thick fender washer (p/n 98100485) and locknut (p/n 98100255) on each screw. (See Figure 1-3). Repeat this step on the opposite side.

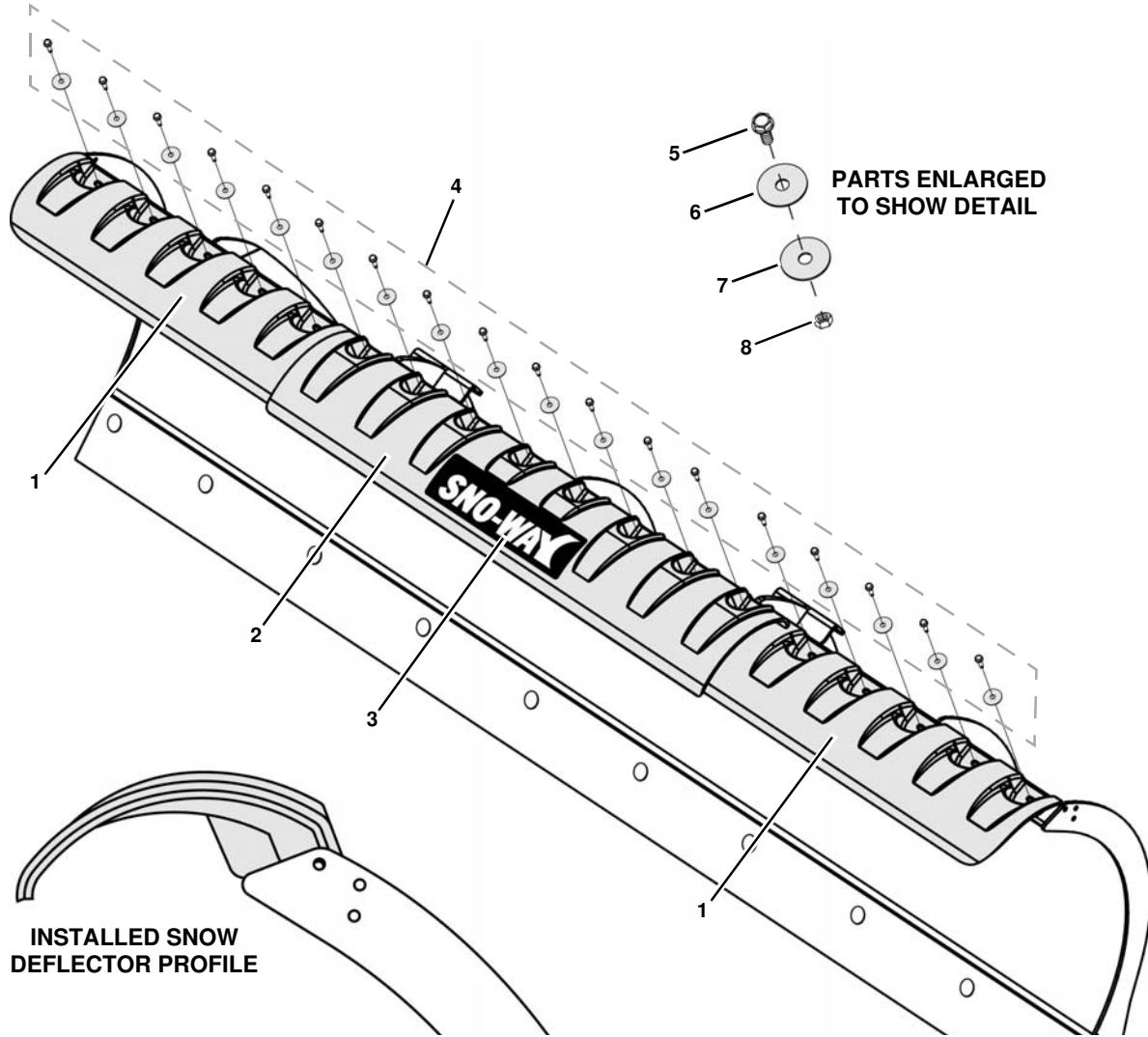


**Figure 1-3**

6. Tighten all screws securely, but do not over-tighten.

**IMPORTANT: Over-tightening the capscrews will result in damage to the deflector. Recheck all cap screws to ensure that they have NOT been over-tightened. Check tightness of screws every 20 hours of operation.**

# PARTS LIST



ITEM	PART NO.	DESCRIPTION	QTY.
1	96108614	Sno-Way E-Z Snow Deflector, Outer Section .....	2
2	96108615	Sno-Way E-Z Snow Deflector, Center Section.....	1
3	97101315	Decal, Sno-Way Deflector.....	2
4	96113442	Hardware Kit, Sno-Way E-Z Fit Snow Deflector (includes items 5, 6, 7, 8).....	1
5	98100253	Hex Head Cap Screw, 1/4-20 x 1-1/4" .....	20
6	98100484	Fender Washer, 1/4" ID, 1-1/2" OD, 1/8" Thick.....	20
7	98100485	Fender Washer, 1/4" ID, 1-1/2" OD, 1/16" Thick.....	20
8	98100255	LN, 1/4" x 20 .....	20

SNO-WAY® INTERNATIONAL, INC.



Hartford, WI 53027 USA  
 Website: [www.snoway.com](http://www.snoway.com)  
 ©2013 Sno-Way® International