

# 29R

**SNO-WAY®** Move it.

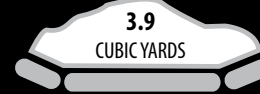
## Snow Plow Attachments

8' - 10" 29RSKD Steel Moldboard with Steel Cutting Edge

### 29R SNOW MOVING CAPACITY



29R SERIES



29R SERIES AT  
45° ANGLE



29R SERIES AT  
90° ANGLE

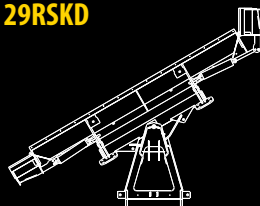
### FEATURES

- » Sno-Way SKD plows work with universal skid steer plate or tractor loader attachment plates
- » Angle cylinder crossover relief valves protect the blade when an object is struck (standard)
- » Integrated shoe receiver (shoes optional)
- » Patented Ground Hugger™ blade design
- » Plow uses existing auxiliary skid steer hydraulics and quick coupler hose connections (not included)
- » Pre-drilled top rail holes for E-Z Fit™ Snow Deflector
- » Specially designed trip springs provide full load trip action for uninterrupted plowing
- » Stitch welded 12 gauge blade for superior rigidity and strength
- » Tight blade curl geometry provides optimum snow rolling action
- » Center A-frame float linkage to allow for contour changes
- » Triple-coat protection
  - Zinc phosphate wash
  - Automotive E-coat primer
  - Military grade powder coat finish
- » Full hydraulic single switch actuation

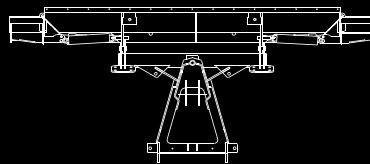


29RSKD Shown with optional Blade Guides

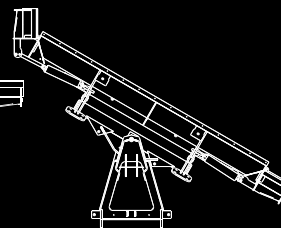
### 29RSKD



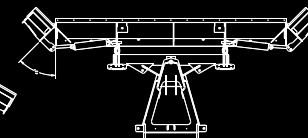
Angle Left Wing Position



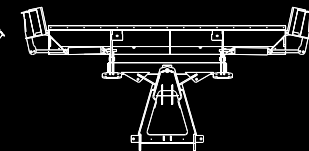
Maximum Width (8' 10")



Minimum Width with Angle (7 ft.)



45° Scoop Position



90° Box Wing Position