



**Assembly
&
Installation Instructions**

**FOR
VEHICLE MOUNT KIT 99101049
USING
VEHICLE CENTER MEMBER 99100892**

**TO FIT
2011 GM 2500/3500 Silverado/Sierra 4x4**



1. **THINK SAFETY, ALWAYS WEAR SAFETY GLASSES WHEN PERFORMING THE OPERATIONS PRESCRIBED IN THESE INSTRUCTIONS**
2. **READ ALL INSTRUCTIONS CAREFULLY BEFORE ATTEMPTING INSTALLATION**
3. **BEFORE BEGINNING WORK MAKE SURE TO SET PARKING BRAKE AND CHOCK WHEELS**



MINIMUM VEHICLE RECOMMENDATIONS

Heavy Duty Alternator
 Heavy Duty Battery
 Manufacturer's Snow Plow Package

NOTE: On some vehicles it may be necessary to use a form of load booster to decrease the vehicle's front suspension sag with the snow plow in place. This can be accomplished with the use of supplementary air bags, booster springs, or similar load boosting devices. Since there are different load boosting devices available, it will up to the customer/end user to decide and purchase the product to suit the application, and not the responsibility of Sno-Way International, Inc.

ASSEMBLY TOOLS NEEDED

Impact Sockets	7/16" – 1-3/8"
Impact Sockets, Metric	10mm – 18mm
Wrenches	7/16" – 1-3/8"
Wrenches, Metric	10mm - 18mm
Torque Wrench	
Rat Tail Pry Bar	

INSTALLATION NOTES

1. **Unless otherwise specified, mount all Vehicle Mount Kit Components to vehicle before tightening any hardware.**
2. **It is recommended that LOCTITE®, or similar thread locking product, be used on ALL mounting hardware (i.e. Nuts, Cap Screws, Bolts, etc.).**
3. Vehicle should be parked on a level surface with a normal vehicle load on the FRONT suspension.
4. Items in parentheses () refer to quantity required for that step. Items with a pound sign (#) indicate the part number as found in the parts list on the last page of this document. Example: (2) of item #7.
5. It maybe necessary to relocate license plate holder. Relocate under the driver's side headlight by drilling new holes in the bumper.

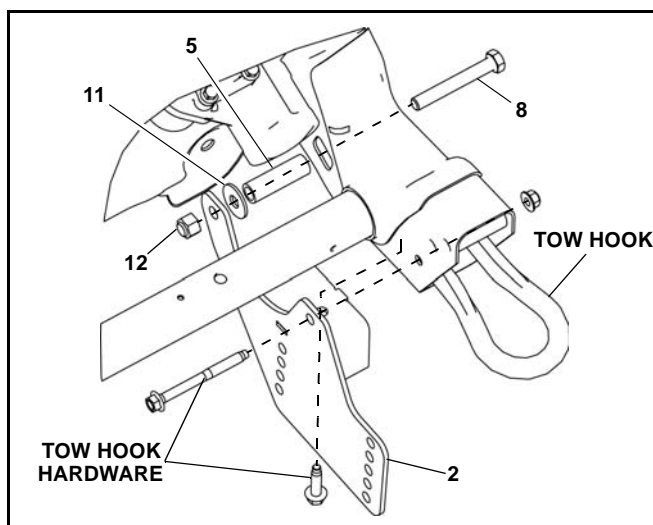


Figure 1

MOUNTING INSTRUCTIONS

1. Remove the bumper with the air dam attached. Retain with hardware for replacement at the end of the installation. Typically, the front fascia or air dam of the vehicle will need to be modified or removed to accommodate the Vehicle Mount Kit.
2. Remove splash shield from underneath the vehicle. It is possible to reinstall the splash shield on the vehicle, above the Vehicle Center Member (#1), but modifications may be needed. (Otherwise retain with hardware for future use.)
3. Remove the tow hooks and retain with hardware for re-installation. NOTE: For steps 4 through 8, refer to Figure 1.
4. Insert (1) of item #8 through the hole opposite the square cut out on the driver side frame rail.
5. Slide (1) of item #5 & #11 over item #8, while item #8 is within the truck frame
6. Loosely attach item #12 to item #8
7. Fit item #2 to the driver side frame rail by aligning the hole and slot of item #2 to the holes from which the tow hook hardware was removed.
8. Loosely attach the tow hook and item #2 with the previously removed tow hook hardware.
9. Repeat steps 4 through 8 to install item #3 on the passenger side.

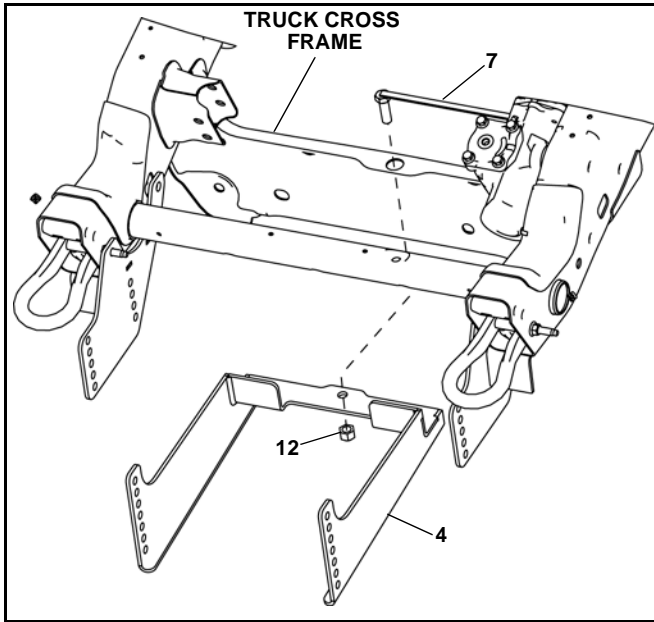


Figure 2

10. Position item #4 under the truck's cross frame. Insert item #7 into the cross frame through the top and into the hole located in the middle. Slide item #4 over item #7 and loosely attach with item #12. (See Figure 2.)
11. Attach item #1 to item #2 & #3, using (8) of item #9, (4) of item #6, (2) of item #10, and (6) of item #13. (See Parts List Illustration.)
12. Secure item #1 to item #5 using (4) of item #9 and (4) of item #13.
13. Using the Torque Specification Chart given, torque all bolts starting at the rear and working forward.
14. Re-install the bumper onto the vehicle.

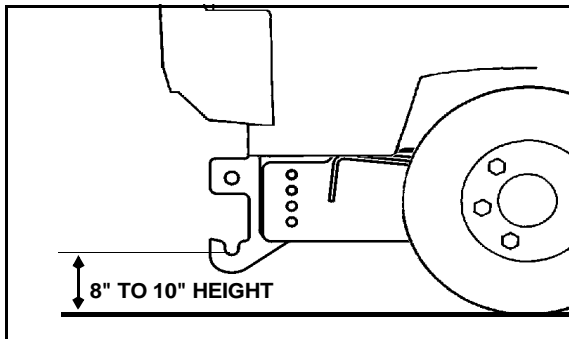


Figure 3

IMPORTANT: Height from the bottom of the lower pin slots on the Vehicle Mount Kit to the ground should be between 8" and 10" for proper operation.

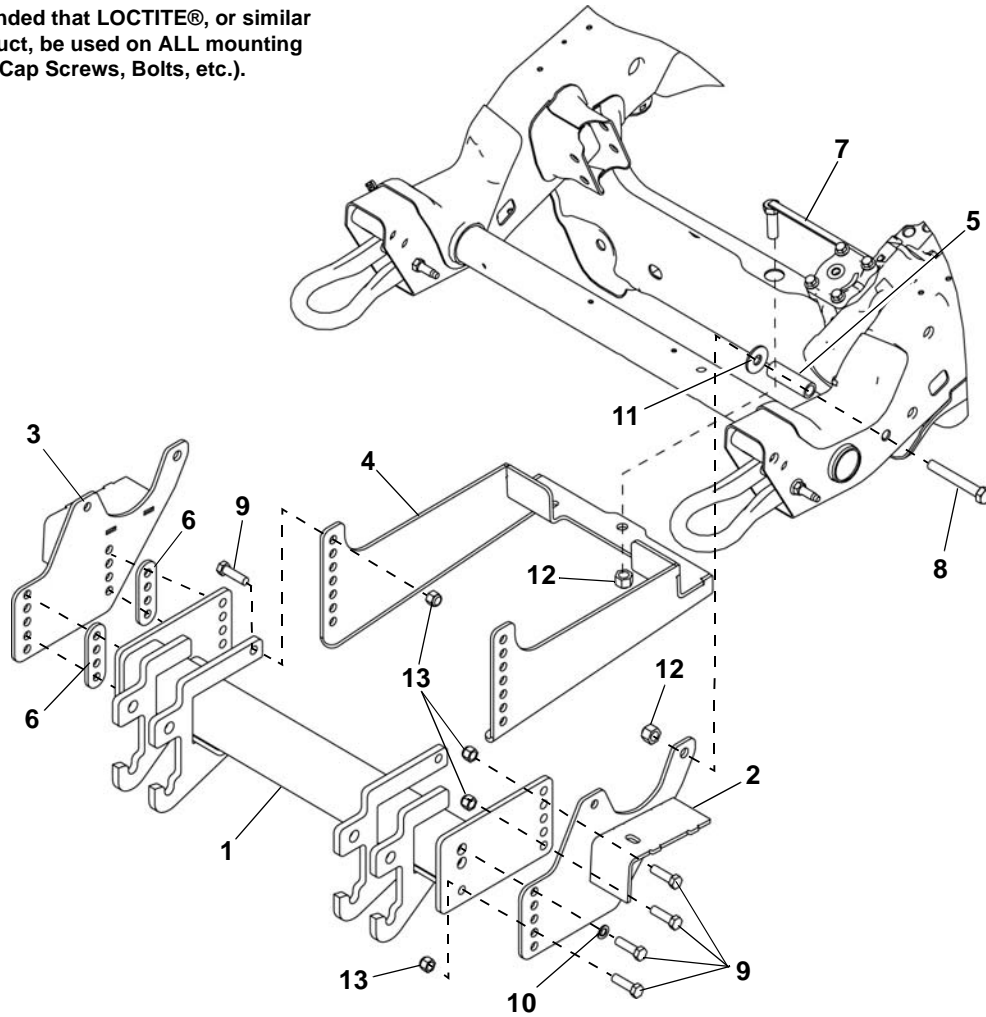
TORQUE SPECIFICATIONS FOR STANDARD MACHINE HARDWARE					
Bolt Size	GR.2 Dry	GR.5 Dry	GR.8 Dry	Metric Size	GR.8.8 Dry
1/4"	66*	9	12	M8	17
5/16"	11	17	25	M10	35
3/8"	20	30	45	M12	60
7/16"	32	50	70	M14	95
1/2"	50	75	110	M16	155
9/16"	70	110	150		
5/8"	100	150	220		
3/4"	175	260	380		
7/8"	170	430	600		
1"	250	640	900		

Note: These torque values are to be used for all hardware. Unless otherwise specified, all torque values must meet this specification.
 Note: All torque values are in Ft.-Lbs unless otherwise stated
 Note: *In-Lbs

REMEMBER After 5 to 10 hours of snowplow usage, re-torque all Cap Screws!

PARTS LIST

Note: It is recommended that LOCTITE®, or similar thread locking product, be used on ALL mounting hardware (i.e. Nuts, Cap Screws, Bolts, etc.).



ITEM	PART NO.	DESCRIPTION	QTY.
1	99100892	Vehicle Center Member (96108919).....	1
2	96110326*	Front Mtg Weldment, DS	1
3	96110327*	Front Mtg Weldment, PS	1
4	96110331*	Crossmember Rear Weldment	1
5	96104099	Spacer, Tube	2
6	96108690	Spacer, VCM, 1/4"	4
7	96112328	Handle Bolt Weldment, 5/8"-11 x 2"	1
8	98009196	Hex Head Cap Screw, 5/8"-11 x 5"	2
9	98100095	Hex Head Cap Screw, 1/2"-13 x 1-3/4"	2
10	98009012	Lock Washer, 1/2"	2
11	98009039	Flat Washer, 5/8", B Regular	2
12	98009038	Lock Nut, 5/8"-11, Nylock Insert	3
13	98009013	Lock Nut, 1/2"-13, Nylock Insert	10

* Not Available As a Service Part

SNO-WAY® INTERNATIONAL, INC.



Hartford, WI 53027 USA
 Website: www.snoway.com
 ©2010 Sno-Way® International