

SNO-WAY®

SNOW & ICE CONTROL EQUIPMENT

ASSEMBLY & INSTALLATION INSTRUCTIONS

**MEGABLADE™ VEHICLE MOUNT KIT
99100963**

**TO FIT
2008- FORD F250 - F550**

Sno-Way®, Down Pressure® and EIS® are registered trademarks of Sno-Way International, Inc.
ProControl™, MegaBlade™, V-Wing™, E-Z Switch™, Revolution™, MaxAdjust™, SpeedLock™, and QuickJack™
are trademarks of Sno-Way International, Inc.

©2009 Sno-Way® International

97101515B



1. **THINK SAFETY, ALWAYS WEAR SAFETY GLASSES WHEN PERFORMING THE OPERATIONS PRESCRIBED IN THESE INSTRUCTIONS**
2. **READ ALL INSTRUCTIONS CAREFULLY BEFORE ATTEMPTING INSTALLATION**
3. **BEFORE BEGINNING WORK MAKE SURE TO SET PARKING BRAKE AND CHOCK WHEELS**



MINIMUM VEHICLE RECOMMENDATIONS

Heavy Duty Alternator
 Heavy Duty Battery
 Manufacturers Snow Plow Package

NOTE: On some vehicles it may be necessary to use a form of load booster to decrease the vehicle's front suspension sag with the snow plow in place. This can be accomplished with the use of supplementary air bags, booster springs, or similar load boosting devices. Since there are different load boosting devices available, it will up to the customer/end user to decide and purchase the product to suit the application, and not the responsibility of Sno-Way International, Inc.

ASSEMBLY TOOLS NEEDED

Drill Bits	17/32"
Impact Sockets	7/16" – 1-3/8"
Impact Sockets, Metric	10mm – 18mm
Wrenches	7/16" – 1-3/8"
Wrenches, Metric	10mm - 18mm
Torque Wrench	
Rat Tail Pry Bar	

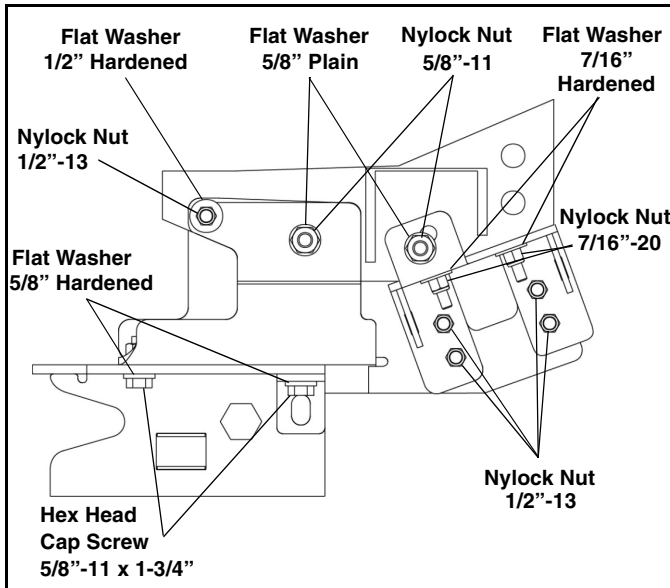
INSTALLATION NOTES

1. **Unless otherwise specified, mount all Subframe Components to vehicle before tightening any hardware.**
2. **It is recommended that LOCTITE®, or similar thread locking product, be used on ALL mounting hardware (i.e. Nuts, Cap Screws, Bolts, etc.).**
3. Vehicle should be parked on a level surface with a normal vehicle load on the FRONT suspension.
4. Items in parentheses () refer to quantity required for this step. Items in parentheses with a pound sign (#) indicate the part number as found in the parts list on the last page of this document.
 Example: (2) 5/8" - 11 x 2" Cap Screws (#10).
5. It maybe necessary to relocate license plate holder. Check state and local laws for placement, if applicable.

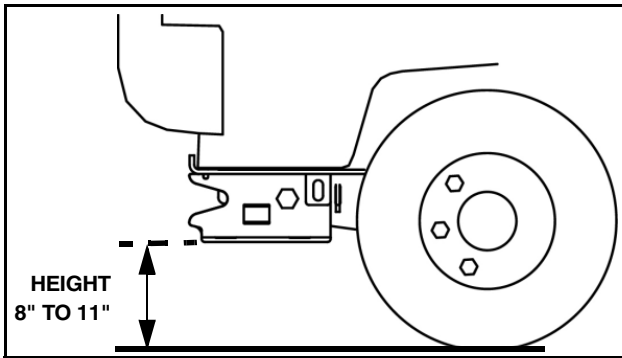
MOUNTING INSTRUCTIONS

1. Remove the air dam and bumper from the vehicle. Retain fasteners for installation later.
2. Remove the metal sway bar brackets and retain for reinstallation in a later step.
3. Completely remove the sway bar fasteners and bolt clips from the keyholes in the truck frame. Retain hardware for reinstallation if the vehicle mount kit is removed from the vehicle.
4. Place (1) Spacer Plate (#6) inside the drivers side of the truck frame, then insert (2) 7/16"-20 x 2-1/2" Cap Screws (#12) through (2) 7/16" Flat Washers (#13), then through the Spacer Plate and the truck frame. (For F450/F550 applications 2 more 7/16" Flat Washers are used.)
5. Install (1) Rear Side Weldment, DS (#4), aligning the appropriate holes in the frame with the holes in the Rear Side Weldment. Then place the sway bar in position and align the sway bar with the fasteners coming from the frame. Attach using (2) 7/16" Nylock

- Nuts (#14) and hand tighten.
6. Insert (1) 5/8"-11 x 2" Cap Screw (#15) and (1) 5/8" Flat Washer (#16) into the truck frame and out through the hole on the side of the Rear Side Weldment, DS. Attach using (1) 5/8" Flat Washer (#16) and (1) 5/8" Nylock Nut (#17) and hand tighten.
7. Position (1) Front Side Weldment, DS (#2) so that the holes align with the holes in the front of the frame. In the holes on the inside of the frame insert from inside of frame (2) 1/2"-13 x 1-1/2" Cap Screws (#9) and secure with (4) 1/2" Flat Washers (#10) [(2) on the inside of the frame and (2) used on the outside of the Front Side Weldment] and (2) 1/2" Nylock Nuts (#11). Secure the front hole on the outside of the truck frame by using (1) 1/2" Nylock Nuts (#11). Secure the rear angled slot using (1) 5/8"-11 x 2" Cap Screw (#15), (2) 5/8" Flat Washers (#16) (on the inside and the outside of the frame) and (1) 5/8" Nylock Nut (#17).
8. Align the rear holes of the Rear Side Weldment, DS (#4) and attach using (4) 1/2"-13 x 1-1/2" Cap Screws (#9) and (4) 1/2" Nylock Nuts (#11).
9. Repeat Steps 4-8 on the passenger side of the vehicle.



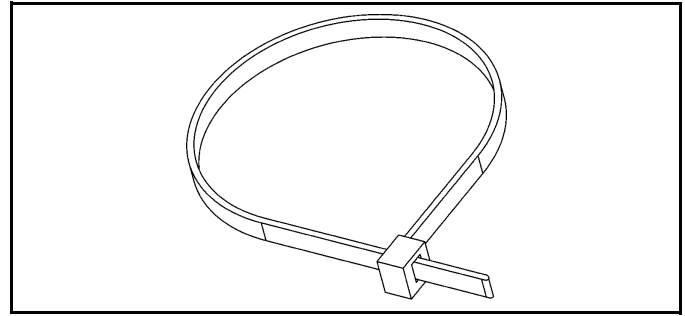
10. Install the Vehicle Receiver Member (#1 - Found in the Power Pack Assembly) to the DS and PS Side Weldments using (8) 5/8"-11 x 1-3/4" Cap Screws (#7) and (8) 5/8" Hardened Flat Washers (#8).
11. Fully tighten all the Cap Screws on the Rear Side Weldments, then fully tighten the Cap Screws on the Front Side Weldments, and finally tighten all the Cap Screws that remain using the torque specification chart provided.



IMPORTANT: Height from the bottom of the Vehicle Receiver Member (VRM) to the ground should be between 8" and 11" to ensure proper operation.

12. Remove the plastic bracket holding the metal cooler lines from the passenger side of the truck frame. Stack (3) 1/2" Flat Washers (#10) over the bracket fastener.

13. Reinsert the fastener into the original hole to hold its position. Wrap (1) tie strap (#18) around the entire frame and tubing behind the bracket. Do not wrap tie strap over any other wires or tubes or go inside the truck frame. An extra tie strap (#18) is included.



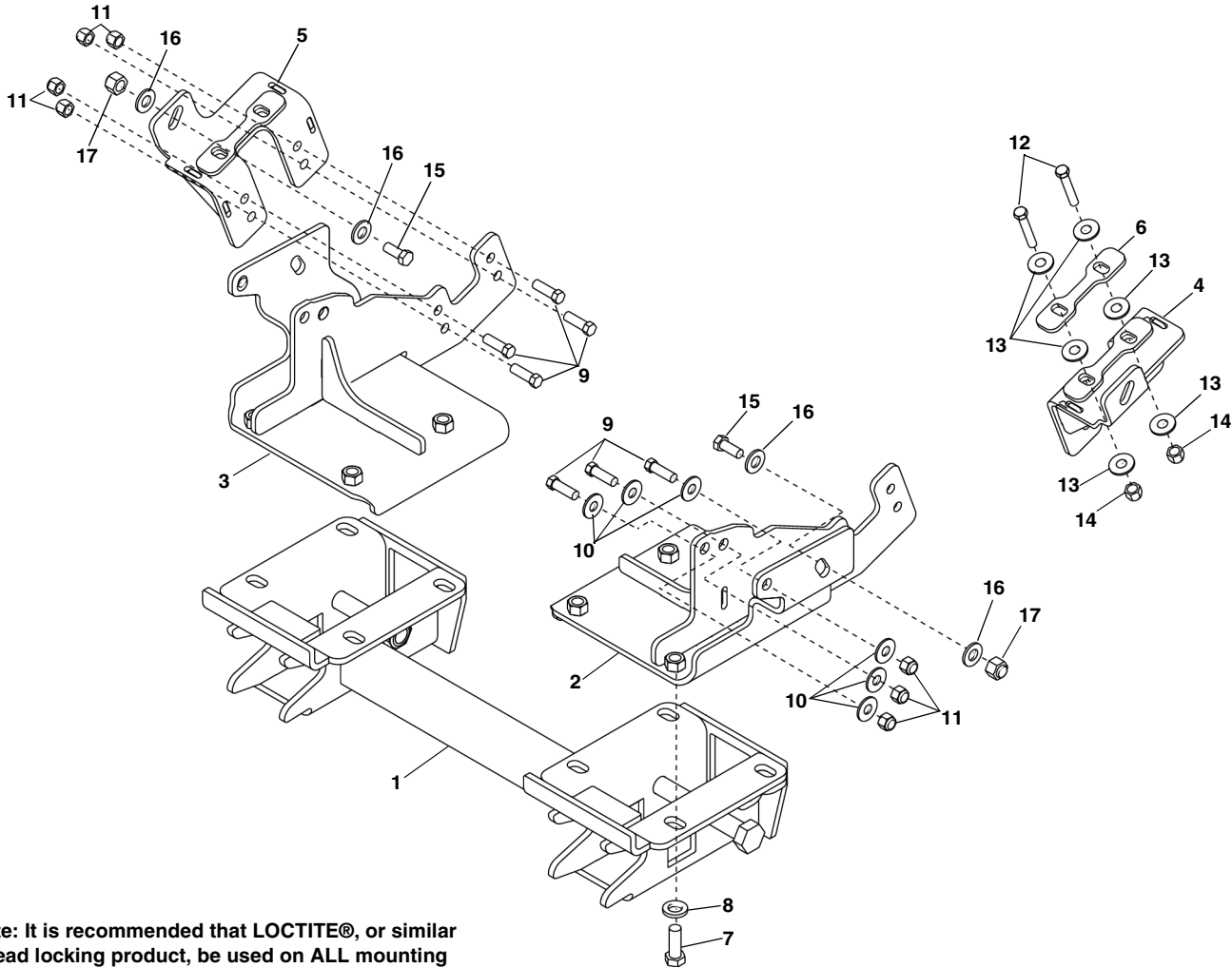
14. Tighten tie strap until it is snug making sure not to crimp the tubing. Trim excess length if needed.
15. Reattach the bumper with original hardware. Retain air dam and its hardware if the vehicle mount kit is ever removed.

REMEMBER After 5 to 10 hours of snowplow usage, re-torque all cap screws.

TORQUE SPECIFICATIONS FOR STANDARD MACHINE HARDWARE					
Bolt Size	GR.2 Dry	GR.5 Dry	GR.8 Dry	Metric Size	GR.8.8 Dry
1/4"	66*	9	12	M8	17
5/16"	11	17	25	M10	35
3/8"	20	30	45	M12	60
7/16"	32	50	70	M14	95
1/2"	50	75	110	M16	155
9/16"	70	110	150		
5/8"	100	150	220		
3/4"	175	260	380		
7/8"	170	430	600		
1"	250	640	900		

These torque values are to be used for all hardware. Unless otherwise specified, all torque values must meet this specification.
All torque values are in Ft.-Lbs unless otherwise stated
*In-Lbs

PARTS LIST



Note: It is recommended that LOCTITE®, or similar thread locking product, be used on ALL mounting hardware (i.e. Nuts, Cap Screws, Bolts, etc.).

ITEM	PART NO.	DESCRIPTION	QTY.
1	96112795*	Weldment, VRM (included in power pack)	1
2	96111333*	Front Weldment, DS	1
3	96111351*	Front Weldment, PS	1
4	96112023*	Rear Side Weldment, DS	1
5	96112024*	Rear Side Weldment, PS	1
6	96110355	Spacer Plate	2
7	98100445	Hex Head Cap Screw, 5/8"-11 x 1-3/4"	8
8	98100446	Flat Washer, 5/8", .195/.170 Thick, Hardened	8
9	98009010	Hex Head Cap Screw, 1/2"-13 x 1-1/2"	14
10	98100176	Flat Washer, 1/2", Hardened	12
11	98009013	Lock Nut, Nylock, 1/2"-13	14
12	98100393	Hex Head Cap Screw, 7/16"-20 x 2-1/2"	4
13	98100394	Flat Washer, 7/16", Hardened	12
14	98100395	Lock Nut, Nylock, 7/16"-20	4
15	98009041	Hex Head Cap Screw, 5/8"-11 x 2"	4
16	98009039	Flat Washer, 5/8"	8
17	98009038	Lock Nut, Nylock, 5/8"-11	4
18	96110509	Tie Strap, HD (Not Shown)	2

* Not Available As a Service Part

SNO-WAY® INTERNATIONAL, INC.

SNO-WAY
SNOW & ICE CONTROL EQUIPMENT

Hartford, WI 53027 USA
Website: www.snoway.com
©2009 Sno-Way® International